

# Climate Change Abuses our Natural Resources and Rights in the Pacific/Small Island Developing States (SIDS)



Ben Namakin

Conservation Society of Pohnpei, FSM

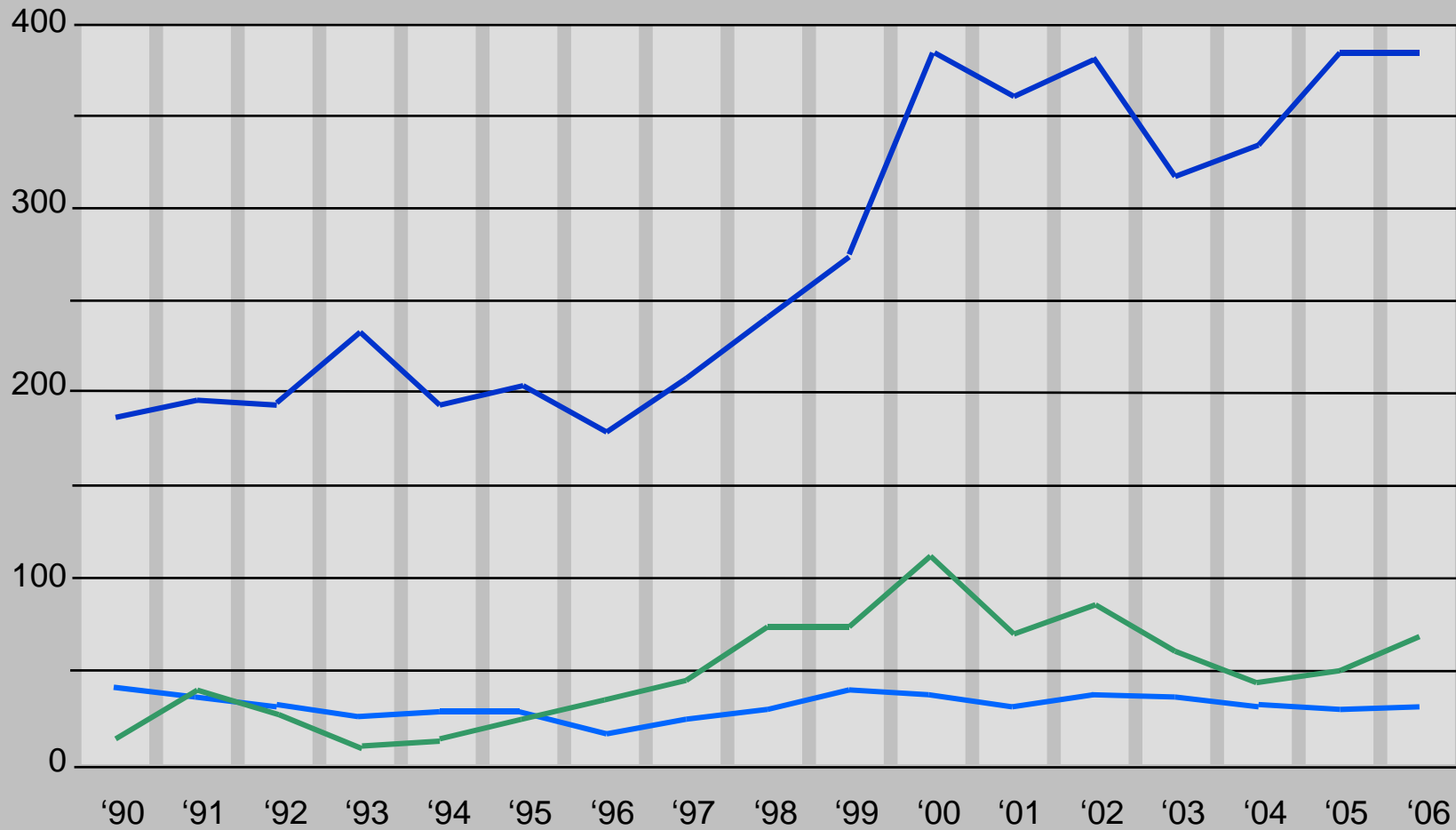
# General Focus of the Side Event

- **Ice and Snow**
- **Melting of ice and snow etc.**
- **Linkages to the Pacific**
- **Sea level rise**
- **Inundation**
- **Salinity of water lenses etc**

**WHAT IS THE NATURE OF THE  
PROBLEM WE ARE DEALING  
WITH HERE!**

# DISASTER TRENDS – GLOBAL SCALE

Number of disasters



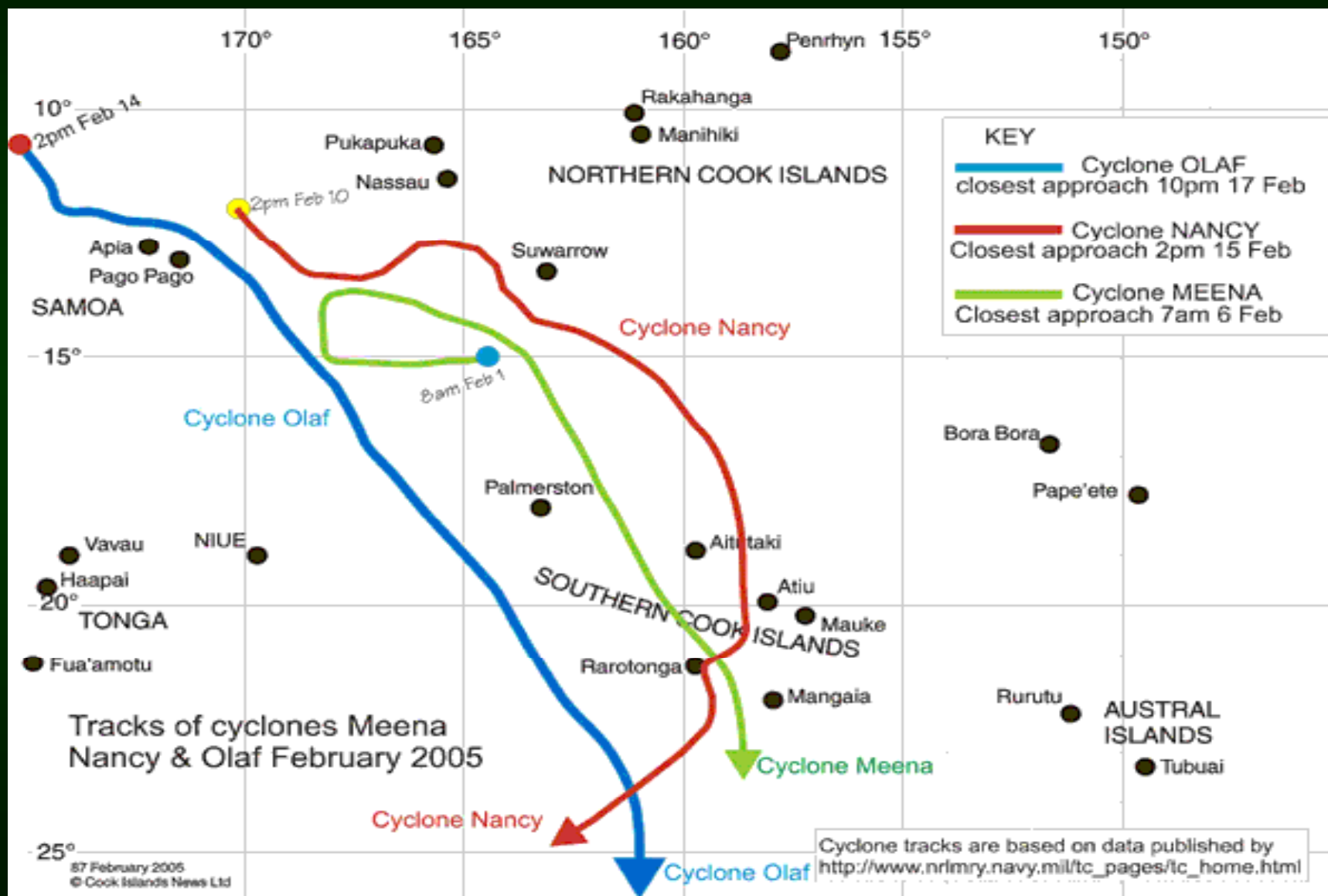
geo-physical

hydro-meteorological

epidemics, insect infestations

Source: CRED

# FEBRUARY 2005 CYCLONES



# *Changes felt today*



Ben Namakin - CSP, Pohnpei FSM



Kaburee Yeeting-Kiribati MFMRD



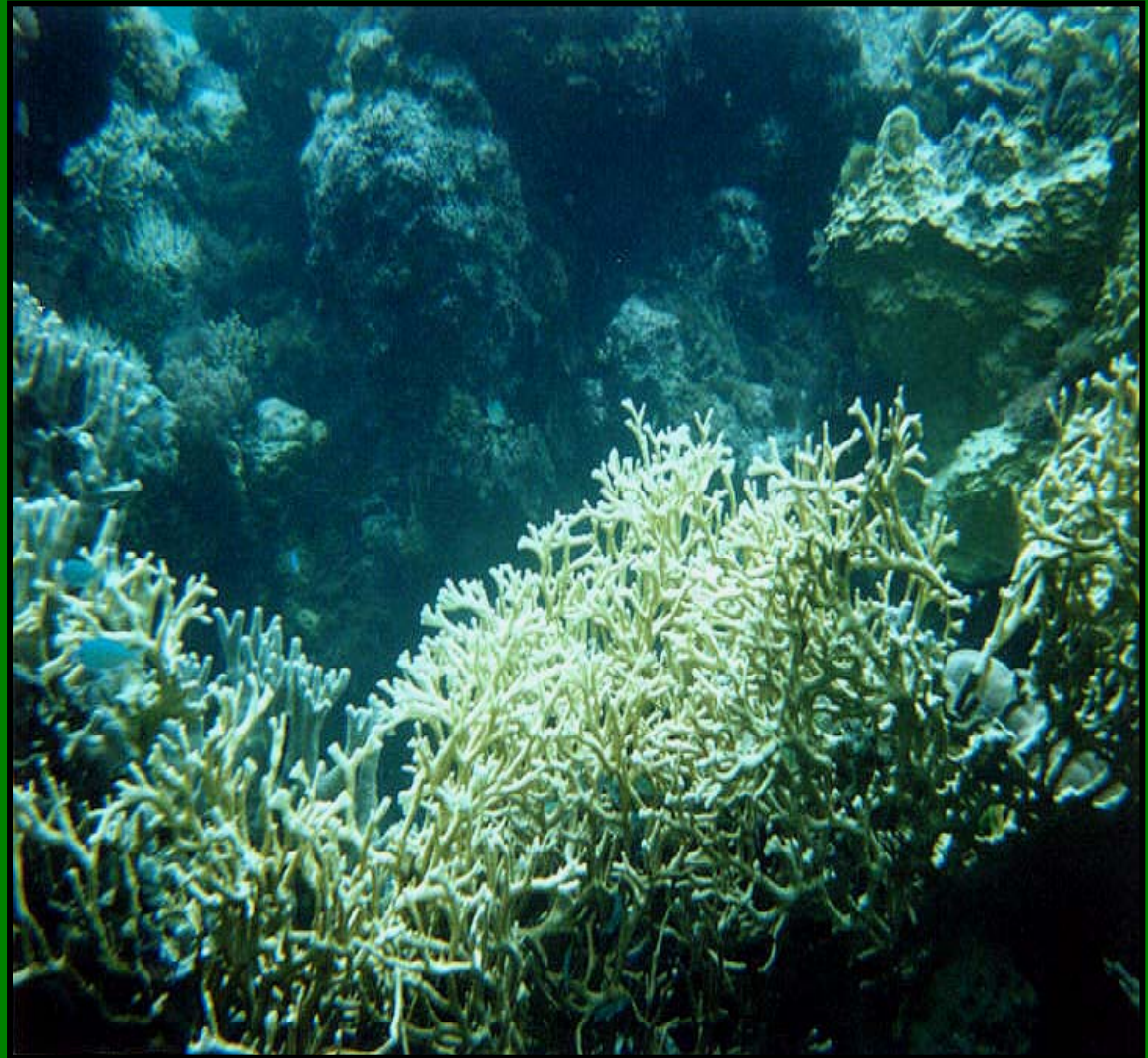
Environmental Response and Coordination Office-Palau



Eugene Joseph-CSP, Pohnpei FSM

## Climate Change effects that we see today

- Flooding
- Drought
- Sea level rise
- Coral bleaching
- Saltwater intrusion and more
- Effect is happening more frequently and intensely these days, worse in the Pacific



Coral bleaching in Pohnpei, FSM



*Most vulnerable:*

*-limited land spaces*

*-limited financial and human resources*

*-Our lifestyle depend on the sea and land resources, but these are in the front of CC Impacts*

*We contribute less than 1% of greenhouse of gas emissions, yet we pay the price*





## Pacific Island monthly *April/May 1989*

*The word 'goodbye' was said to my homeland and other low-lying islands in the Pacific when I was in 3<sup>rd</sup> grade*

*What has been done?*

*Where will we go? What about the work we do in preserving our natural heritage?*

*Not only environmental, social and economical issue, it is also human rights issue*

Photo curtesy of DOE,  
Kiribati 2001



**When the normal becomes abnormal**

Photo curtesy of Green Peace



**When the normal becomes abnormal**  
**King Tide 2006 - Kiribati**

# Coconut Palms - inundated



Sea Level  
Rise or  
Tectonics

An underwater photograph of a vibrant coral reef. The water is clear and blue, with sunlight filtering through from above. The reef is composed of various types of coral, including large, branching brown corals and smaller, colorful ones in shades of purple, yellow, and green. Small fish are visible swimming around the coral.

## *Commitment by our Leaders*

*The Micronesia Challenge (MC) was signed by Micronesian leaders, to effectively conserve 30% of near shore marine resources and 20% of forest resources by 2020. The signing of the MC is a giant step to build our resilience to the effects of climate change.*

*We are calling on everyone to assist most vulnerable nations by pushing for adaptation funds*



*Environment & Conservation Division, Kiribati*